



PSU105D
POWER SUPPLY 24 VOLT AC 3A 75VA

A high specification compact wall mounted power supply, this is suitable for a wide range of applications in the fire and security industry, also available in chassis format, rack unit. The power supply unit is fitted with 3 fused outputs to give independent outputs for two devices.

DIMENSIONS

PSU105D This supply is enclosed in an IP56 plastic enclosure with the following dimensions 240 X 190 X 90mm. Chassis dimensions are 180 x 135 x 1.5 bright aluminium plate.

CONSTRUCTION

This power supply has a single winding with 3 fused outputs and on-board AC LED indication. The power supply is mounted onto an aluminium plate so that it can be easily removed if required. The chassis is mounted in an IP56 rated plastic enclosure, with 4 x 20mm cable glands.

TECHNICAL SPECIFICATION

Mains Input Voltage	230/240 volts 50/60 Hz
Mains Input Fuse	1amp Ceramic
Mains Current Consumption	0.32 amp
Output Voltage On Load	24 Volt AC
Output Fuse	3 Amp quick blow fuses
Continuous Operating Current	3 Amp
Maximum Operating Current	3 Amp
Mains Power Indication	YES
Heat Dissipation in Watt's for Air Con Calculations.	50.4 W

TRANSFORMER SPECIFICATION

Our Electrical Transformers are a high quality robust product, manufactured for us to the following standards. **EN 60/742 TEC, BS3535 & UL1411.**

VA Rating	75VA (KT23)
Input Voltage	230Vac
Output Voltage	24Vac
Output Current	3A
Regulation Typ.	8% Approx
Height x Diameter	40x90
Dimensions L x W x H	N/A
Fixing Bolt Size	M4x15mm
Temperature Rise	+60°C
Weight	849g

OPTIONS AVAILABLE

(Part no TAMP)

Tamper switch this option is only available on boxed PSU's, this comes complete with wires (Black= common, Purple= normally closed, White= normally open)

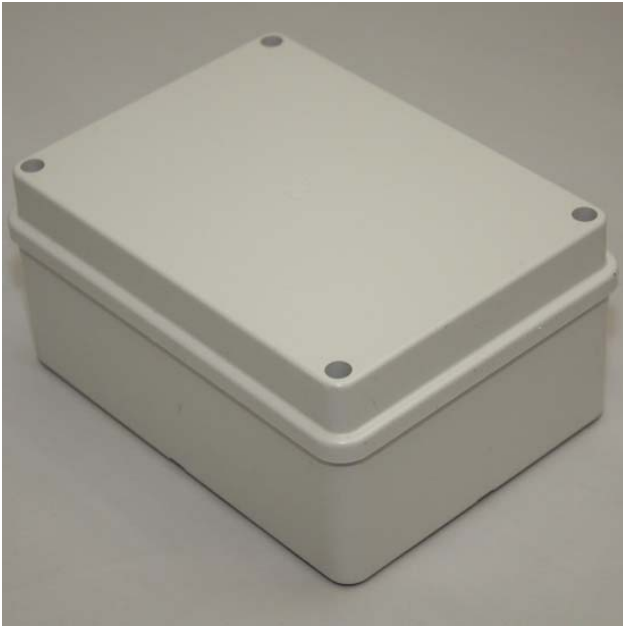
(2U/3U 19")

19" Rack mounted version also available.

(/CH)

Chassis only version unboxed.

Options & Variant Pictures



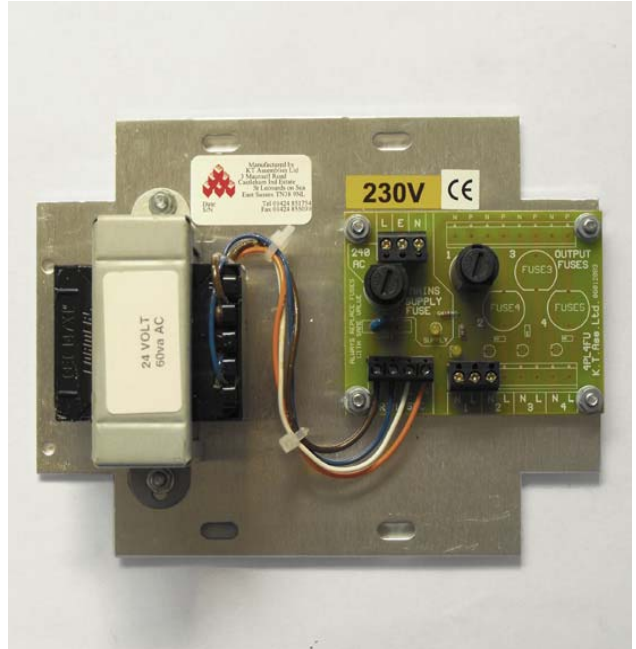
IP Box



LV Type Box



2/3U Racks



Chassis Only, transformer & fuses may vary

Warranty

All of our power supplies are manufactured with build quality and longevity in mind, we are constantly striving to improve upon an already reliable quality product with a very low failure rate, and because of our confidence in our end product's all our power supplies come with a two year return to base warranty against equipment failure.