



## PSU89D/2U/3U/CH & PSU105A POWER SUPPLY 24 VOLT AC 1A 25VA

A high specification compact wall mounted power supply, this is suitable for a wide range of applications in the fire and security industry, also available in chassis format, rack unit or Plastic Box (**PSU105A**)

The power supply unit is fitted with a three way fuse card to give independent outputs for three devices.

### DIMENSIONS

**PSU89D** Supplied in white steel lift off lid enclosure (LVO), 180 X 95 X 95mm.

**PSU89D/CH** Chassis Only 180 x 135 bright aluminium plate.

**PSU105A** Plastic enclosure (190 x 140 x 70mm), with 2x20mm

**PSU89D/2U/3U** 19" Rack version also available.

### CONSTRUCTION

**PSU89D** A rugged steel vented enclosure with a lift off lid and a number of 20mm conduit knockouts providing easy access into the enclosure, finished in powder coated white to match other office and industrial control systems.

The power supply is mounted easily to any flat surface utilising an external fixing flange that has two keyhole slots on each side for ease of fitting and removal if required.

The front of the enclosure can also be screen printed with your company logo in one colour upon request for a small additional cost.

### TECHNICAL SPECIFICATION

Mains Input Voltage	230/240 volts 50/60 Hz
Mains Input Fuse	1amp Ceramic
Mains Current Consumption	0.16 amp
Output Voltage On Load	24 Volt AC
Output Fuse	1 amp ceramic fuse
Continuous Operating Current	1Amp
Maximum Operating Current	1Amp
Mains Power Indication	YES
Heat Dissipation in Watt's for Air Con Calculations.	16.8 W

## TRANSFORMER SPECIFICATION

Our Electrical Transformers are a high quality robust product, manufactured for us to the following standards. **EN 60/742 TEC, BS3535 & UL1411.**

VA Rating	25VA
Input Voltage	230Vac
Output Voltage	24Vac
Output Current	1A
Regulation Typ.	7%
Height x Diameter	47 x 90mm
Dimensions L x W x H	70 (W) x 57 (H) x 60 (Dia) mm
Fixing Bolt Size	M4x15mm
Temperature Rise	+60°C
Weight	737g

## OPTIONS AVAILABLE

(Part no PSU/F??)

Fuse distribution cards of any number can also be specified upon request these will be mounted inside the steel enclosure on pillars. From 2 to 16 fuse outputs.

(Part no TAMP)

Tamper switch this option is only available on boxed PSU's, this comes complete with wires (Black= common, Purple= normally closed, White= normally open)

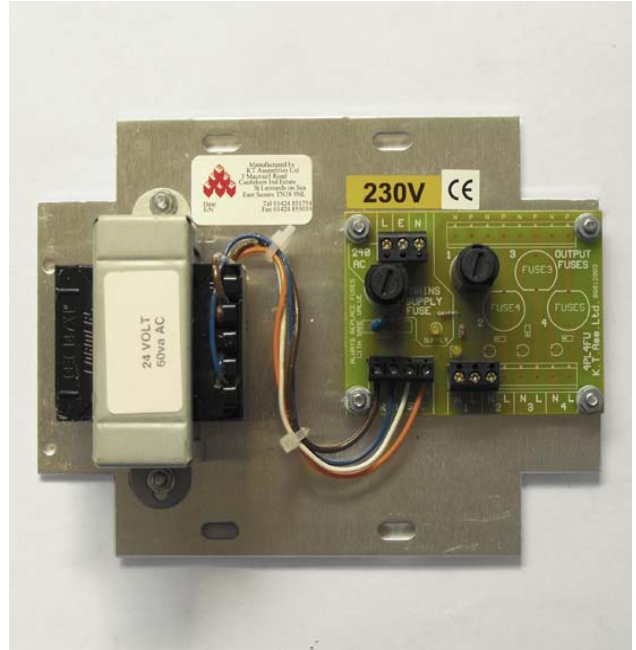
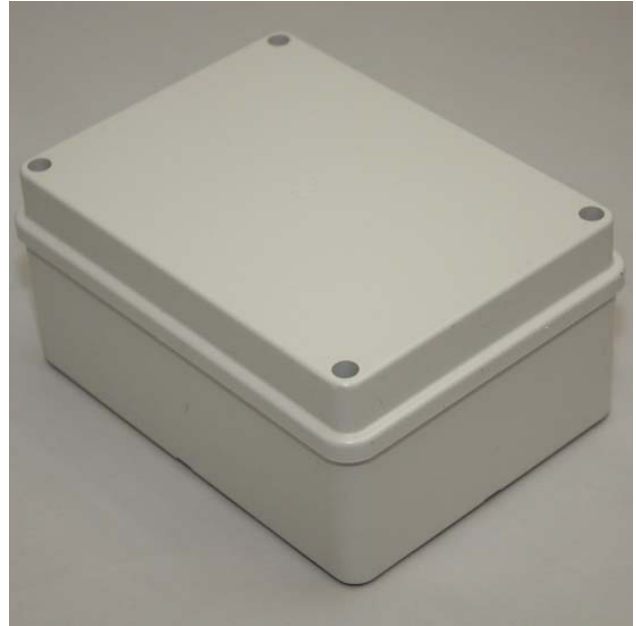
(2U/3U 19")

19" Rack mounted version also available.

(/CH)

Chassis only version unboxed.

## Options & Variant Pictures



## Warranty

All of our power supplies are manufactured with build quality and longevity in mind, we are constantly striving to improve upon an already reliable quality product with a very low failure rate, and because of our confidence in our end product's all our power supplies come with a two year return to base warranty against equipment failure.